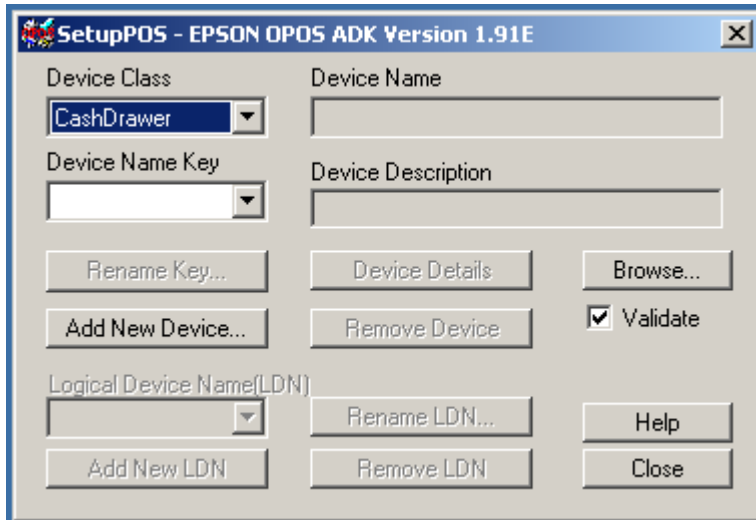


OPOS Installation

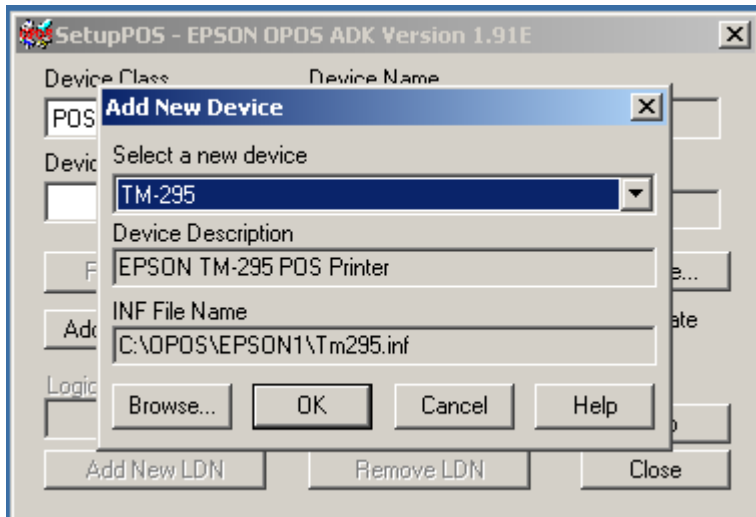
Once MiniPOS is installed SetupOPOS should run automatically, but if not click the Start Button and go to Programs, then OPOS and Click on SetupPOS. You should then be presented with a window like this.



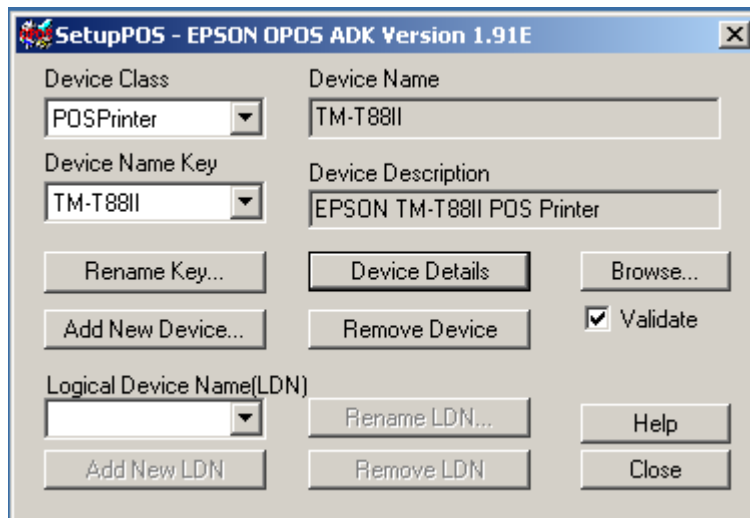
To configure devices in OPOS follow the following procedure.

PosPrinter

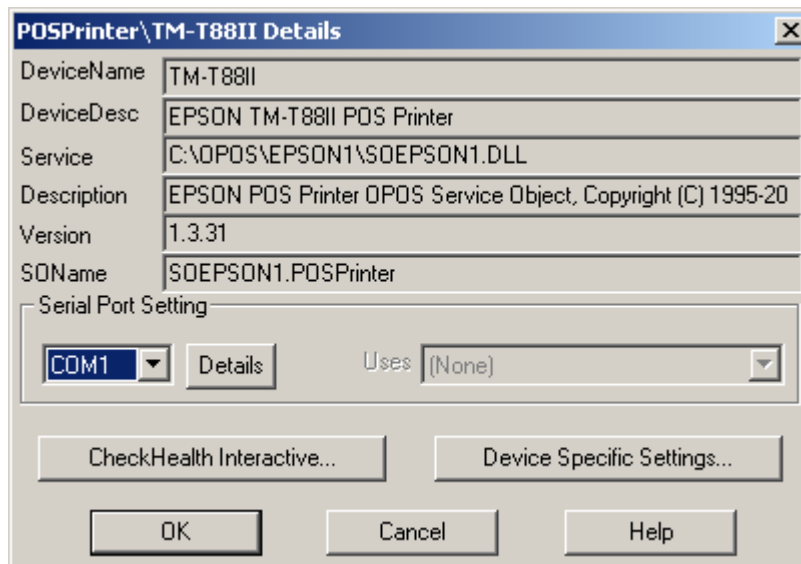
To configure click on the down arrow by the device class and scroll down to PosPrinter. Then click the Add New Device button.



Then Click on the down arrow by Select a new device and scroll down the list until you find the desired printer. Left click on the printer you want to install and then click the ok button.

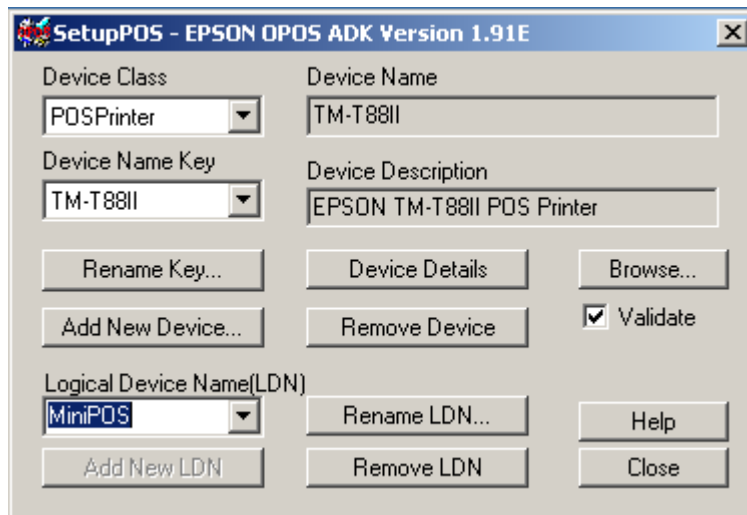


Click on device details, and this window will appear.



Click on the down arrow below the Serial Port Setting and select the relevant com port, which the printer is connected to. This will then grey out the CheckHealth Interactive button and the Device Specific Settings. Then click the ok button.

Then click device details and CheckHealth Interactive button and a pop up will appear select receipt click ok and the printer will print a receipt. Then it will say CheckHealth Interactive was successful, press ok. If it is unsuccessful please contact your Dealer. Press ok again to get back to the main SetupOPOS window.



Add MiniPOS in the Logical Device Name and press the Add New LDN Button which will then grey out.

Cash Drawer

To install the cash drawer you will do the same as the printer but set the cash drawer to the standard default cash drawer and set it to the same com port as the printer.

Then if you have finished configuring devices you can click the close button.