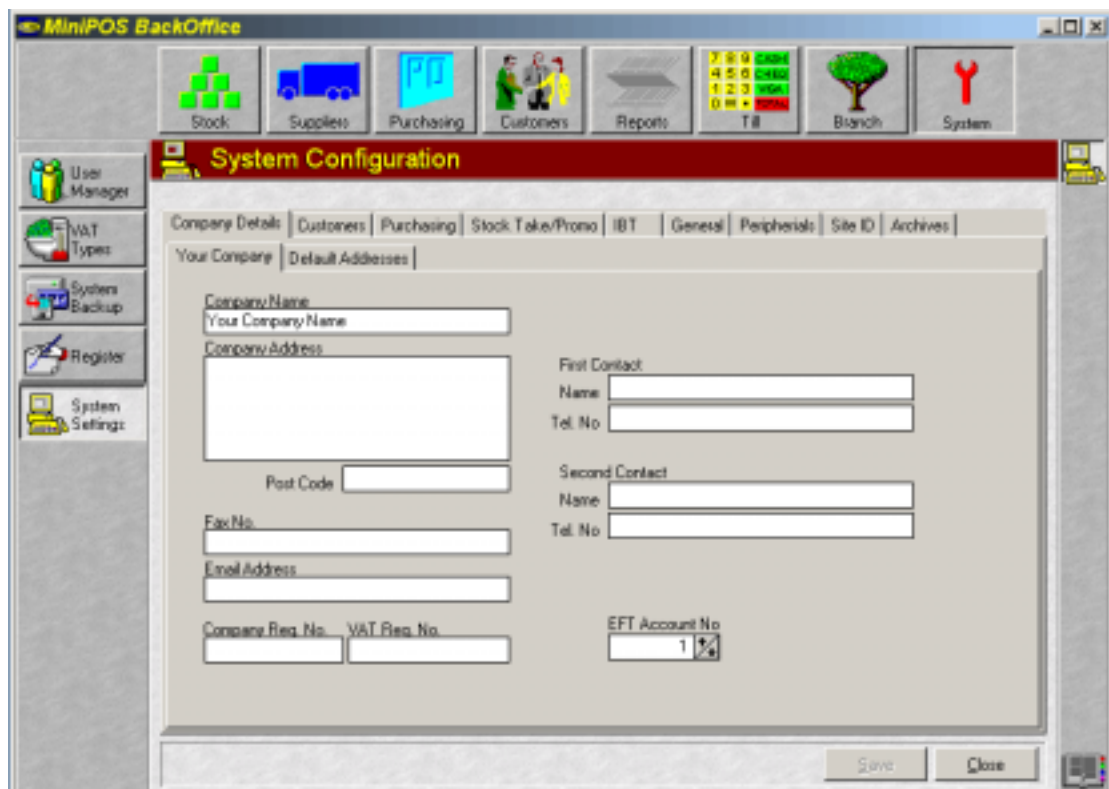


# MiniPOS EFT Software Configuration

After the EFT software is installed ie SoftEFT, you can then configure MiniPOS to use EFT.

## Back Office Configuration

1. Run MiniPOS BackOffice Software.
2. On the BackOffice go to System and then System Settings.
3. On the Company Details Tab you will see EFT Account No and you want to change the number to 1, and click save and then close.
4. Click Start\Programs\Windows Explorer.
5. Navigate to the directory where the EFT data is located ie C:\SoftEFT.
6. Then Right click on the Data Directory and click sharing from the popup menu.
7. Share directory as Data with Full access rights.



## MinPOS Till Configuration

1. Double click Network Neighbourhood and navigate to the machine which has Data shared.
2. Right click on Data and choose Map Network Drive from the popup menu.
3. Select drive M: and tick the reconnect at logon box.
4. Run MiniPOS Till.
5. Double click on the grey bar at the top of the till screen.
6. Double click on Till options.
7. Make sure the Customer EFT Present is ticked.
8. Click on the folder icon on screen.
9. Navigate to the M: Drive.
10. Click OK.
11. The EFT Directory should read M:\



That is It.